

Proposed Habitat Work on Upper and Lower Post Lakes

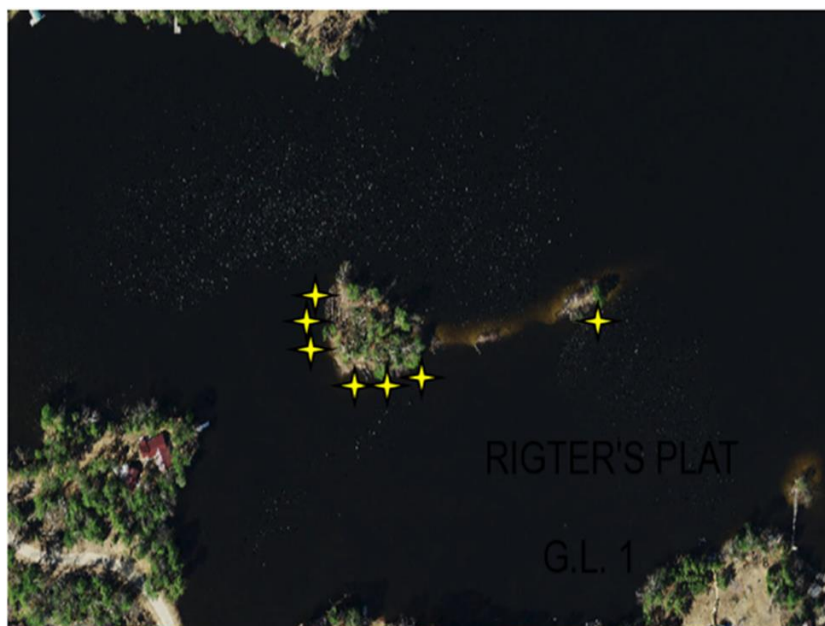
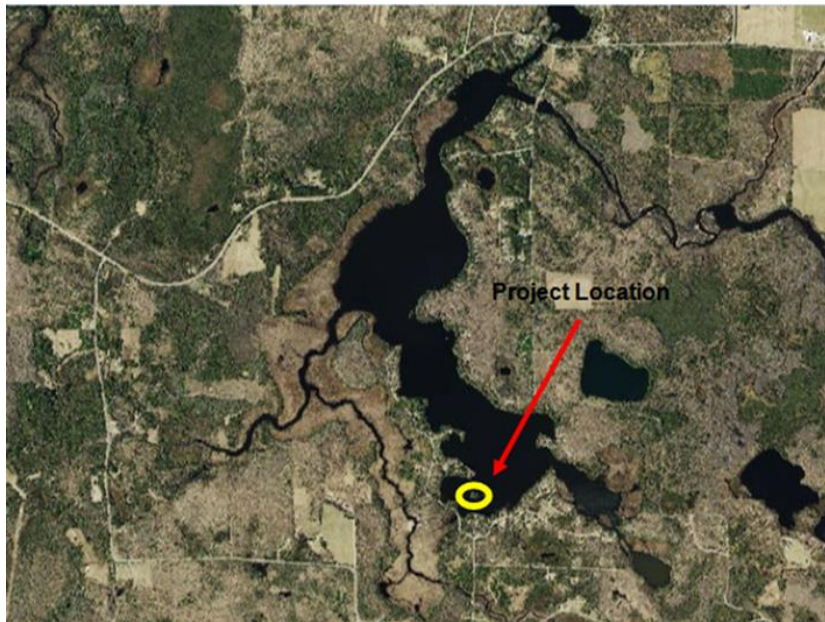
- The Wisconsin Department of Natural Resources is proposing a winter lake habitat project on Upper and Lower Post Lakes
- Large woody habitat is lacking in Upper and Lower Post Lakes
- Large complex woody habitat is important for a variety of fish life history needs. This includes spawning cover and/or substrate, hiding/resting cover for adult and juvenile fish, and substrate for periphyton and invertebrates which are important food items for a variety of fish species.
- On and offshore fish sticks will be used
 - Fish sticks are a standard structure used by fisheries staff to mimic naturally fallen trees.
 - They consist of live full-sized trees not taken off the immediate shoreline.
 - Project will be completed on the ice (late January-March)
 - Minimum of 15 inches of good ice is needed
 - 3 weeks estimated work time
- Goals
 - Supplement naturally recruiting large woody habitat
 - Improve habitat by increasing the amount of wood habitat available for various fish species



An example of a fish stick complex staged on the ice

Lower Post Lake

- Strong summer storms in 2019 caused sever timber blow down on the state-owned islands.
- Repurposing the timber will provide complex woody habitat for fish and increase recreational usability of the islands for the public.
- 20-40 whole trees will be placed
 - 3 to 6 fish stick structures
 - 4-14 trees per structures
 - All structures will be placed on the shore of the state owed islands on Lower Post Lake



Upper Post Lake

- Upper Post has no State-owned shoreline
 - Structures will be placed offshore on the lakebed in the southern bay
 - Structures will be placed in 10-14 feet of water
 - There will be a minimum of 5 feet of clearance between the top of the structure and surface of the water
- 25 trees will be placed
 - 4-5 structures
 - 4-6 trees per structures
- Rock will be used to sink the structures
 - 2- 2.5 feet in diameter rock per tree



Material Needs

- Wedge Rock Anchors
- Cable and Clamps
- Eye Hooks
- Earth Anchors
- Wood Drill Bits
- Rock Drill Bits
- 50 Rock 2-3 feet in diameter
- 25 Hardwood trees <8 inches in DB

Equipment needed

- Tracked skid steer
- UTV
- Chainsaws
- Gas Drill
- Generator
- Various hand tools

Project Cost

- Upper Post- \$2,300
 - Does not include trees
- Lower Post- \$1,200
- Total- \$5,500

Help Requested

- Use of the aquatic plant harvester landing on Lower Post
- Signing and marking of the structures on the ice
 - Safety concerns with recreational vehicles
- 25 hardwood trees for Upper Post
- Funding
 - WDNR funding is \$2,000 short
 - **Post Lake District made a motion to fund \$1,000 (12/12/2020)**